

G96 Plus

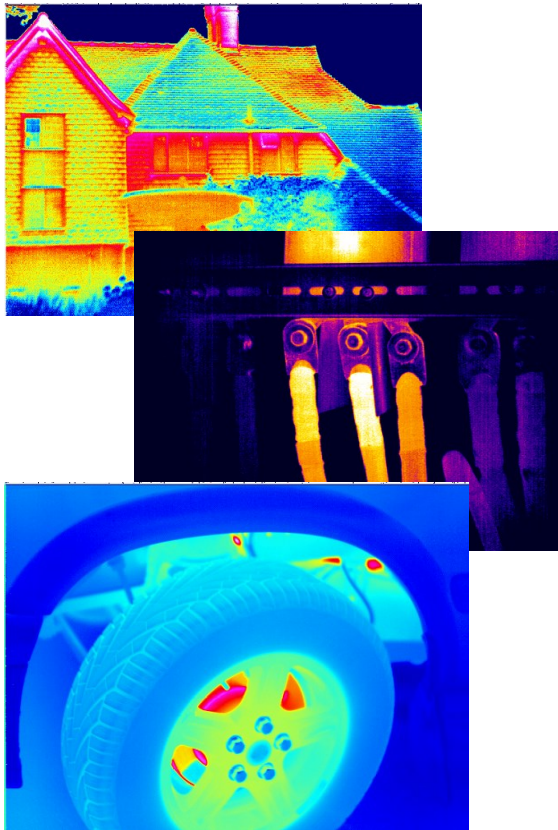
Performance Level Thermal Camera



The G96 Plus Platform has been upgraded recently to allow 6 imaging modes to be added to the camera. The SATIR G96 Plus is a performance level thermal imaging camera that delivers excellent thermal images and video to the end-user. The SATIR G96 camera has 640x480 IR detector which generates 307200 pixels which is currently the highest number of pixels that our thermography camera can offer.

The G96 has a 5" Detachable LCD Screen which makes working in hazardous areas and on long thermal surveys easier for the user. The detachable remote control unit can be operated in either the left or right hand and allows full access to the camera functions.

The G96 comes with a wide range of measurement tools which include 9 movable spots, auto hot/cold spot, line profile, isotherm, Delta-T, 4 area boxes.



Key Features

- 640x480 IR Detector
- 5" Detachable LCD Screen with remote control
- Optional Lenses Available
- Laser Pointer
- GPS Function
- Measurement Tools

G96 Plus Specifications

Image Performance	
Detector Resolution	640x480
Thermal Sensitivity (N.E.T.D)	≤0.03@30°C
FOV/Min. Focus Distance	24°x18°/0.5m
Detection Range	250m
Focal Length	36mm
Spectral Range	8-14μm
Spatial Resolution	0.65mrad
Focus Mechanism	Manual/Motorised/Auto
Measurement	
Temperature Range	-20°C ~ + 600°C, up to +2000°C (Optional)
Accuracy	±2°C or ± 2% of readings
Operating Temperature	-20 to +50°C
Measurement Mode	9 movable spots, auto hot/cold spot, line profile, isotherm, 4 area boxes
Alarm	Yes
Image Presentation	
Image Mode	Thermal/Digital/Duo-Vision/Duo Vision Plus/PIP/PIP Plus
Visible Pixels	HD 5MP Digital Camera
Laser	Class 2 (Activated through dedicated button)
Digital Zoom	1x to 10x, continuous
LCD Display	5" LCD Screen
Capability of Thermal Imaging	Low Voltage / High Voltage
Image Output Mode	NTSC (60Hz) or PAL (50Hz) Composite Video
File Format (Thermal/Visual)	JPEG (Thermal/Visual)
Power System	
Battery Type	DC 8V-11V
Battery Operating Time	3 Hours
Charge Interface	Mains Charger
Power Manage	Auto Shut Off/Sleep Mode
Environmental	
Encapsulation	IP54
Physical Characteristics	
Weight	1.74KG
Dimensions	327mm x143mm x170mm
Other Functions	
Spot Meter Facility, Automatic Calibration, Multi Interfacing Facility	Yes